



SHELL HELIX AND BMW MOTORSPORT

SHELL'S TECHNICAL PARTNERSHIP WITH BMW MOTORSPORT

started in 2015, is one of the latest chapters in Shell's many decades of history in DTM and touring car racing



BMW Motorsport
Premium Technology Partner



COMPETING IN BOTH THE DTM AND THE WEC¹

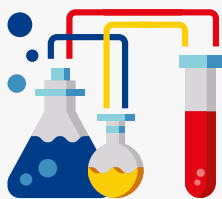


Shell utilises both race series as a test bed to develop new products and technologies

Joining the **GTE Pro²** class category at one of the

MOST PRESTIGIOUS RACES

IN THE MOTORSPORTS CALENDAR



SHELL SCIENTISTS WORK WITH BMW MOTORSPORT'S

engineers to formulate bespoke **Shell Helix Ultra 0W** race lubricant to better fit the benefits of PurePlus Technology...

...which uses a revolutionary gas-to-liquid process to convert natural gas into **99.5% CRYSTAL-CLEAR BASE OIL³**, and delivers long lasting performance



A lower grade viscous engine oil such as **Shell Helix Ultra 0W** provides multiple benefits that include;

1 OVERALL BETTER ENGINE EFFICIENCY



2

MORE EFFICIENT FUEL CONSUMPTION



3

LOWER FRICTION INSIDE THE ENGINE



With just **one engine available per driver per season in DTM**, lubricants are crucial in helping to generate maximum performance and ensuring durability. **Shell Helix Ultra 0W** delivers



LONG LASTING PERFORMANCE and is crucial in helping

MAXIMUM PERFORMANCE ensuring durability

BMW MOTORSPORT CHOOSES SHELL HELIX ULTRA DESIGNED FOR ULTIMATE ENGINE PERFORMANCE



1. DTM – Deutsche Tourenwagen Masters, WEC – World Endurance Championship
2. GTE Pro – Grand Touring Endurance
3. Based on paraffinic hydrocarbon content and significantly higher level of iso-paraffins compared to typical Group II & III base oils